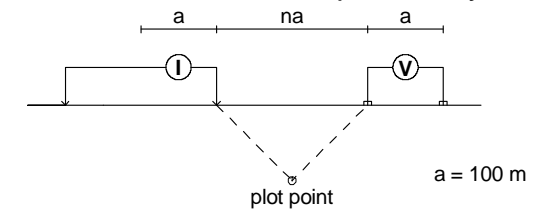


STACKED PSEUDOSECTIONS MAP APPARENT RESISTIVITY

Modified Pole-Dipole Array

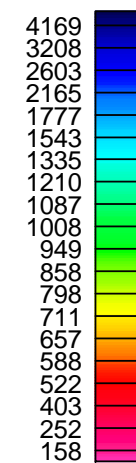
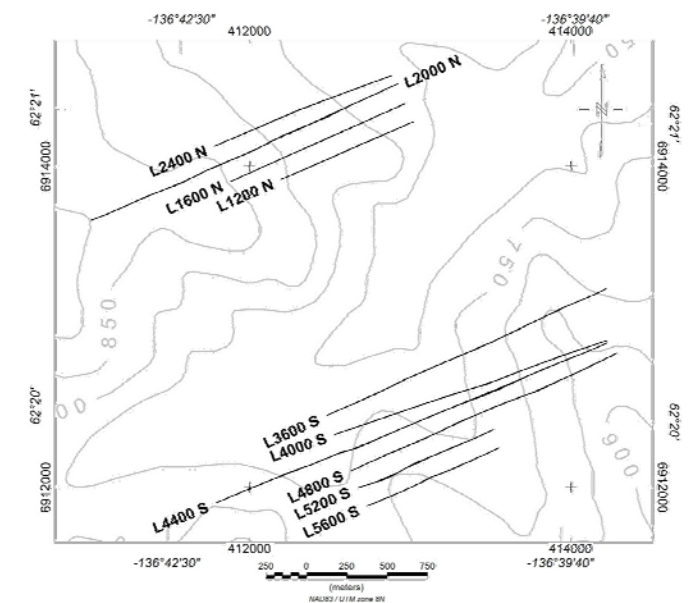


L1200N Stationary electrode at West end of line.
L1600N Stationary electrode at West end of line.
L2000N Stationary electrode at Stations 1000W & 200E
L2400N Stationary electrode at West end of line.

Receiver: Iris ElrecPro

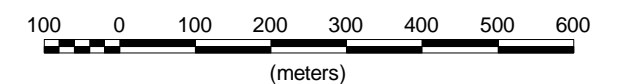
Transmitter: GDD Tx-II 3.6kW

Data File: all lines 100m-final.gdb



Apparent Resistivity
Ohm*m

Scale 1:10000



WESTERN COPPER CORPORATION

INDUCED POLARIZATION SURVEY
CARMACKS COPPER PROJECT
APPARENT RESISTIVITY - 100m DIPOLES
STACKED SECTIONS - NORTH LINES

Mining District: Whitehorse

Datum: Local Grid

NTS: 115 I/07

Drawn by: HS

Job: WRN-7506-YT

Date: 14 Jan 08

AURORA GEOSCIENCES LTD.